



FORD
2022 ESCAPE[®]

IT'S YOUR TIME. **MAKE IT MEMORABLE.**

The 2022 Ford Escape® SUV. It's ready-made for the kind of getaways that become cherished memories. So next time adventure beckons, you and your friends can respond with confidence. A choice of 4 powertrains includes 2 turbocharged EcoBoost® engines, plus a Hybrid and a Plug-in Hybrid! Five Selectable Drive Modes provide an exceptional driving experience. The spacious, adaptable interior features seating for up to 5, with sliding and reclining rear seats that offer plenty of leg room in back. And there's lots of advanced connectivity, too.

Available Ford Co-Pilot360™ Assist+ includes Intelligent Adaptive Cruise Control with Speed Sign Recognition. Plus, available packages like the SE Sport Appearance, SEL Stealth AWD, and Titanium Elite make it easy to personalize your vehicle. Elevate your travels – and start making more extraordinary memories – in the 2022 Escape.

S | SE | SEL | TITANIUM

EcoBoost • Hybrid • Plug-in Hybrid



TITANIUM. Atlas Blue Metallic. Available equipment.

¹. Available at EV-certified Ford Dealers.

Vehicle imagery throughout this brochure may be computer-generated and may include available and aftermarket equipment.

Important information regarding availability. You may have heard the auto industry is experiencing a combination of high demand and global supply-chain constraints. This means our ability to build new vehicles with some features may not be available. We're doing everything we can to innovate our way through this and meet the demand for new Ford vehicles. We will continue to provide updates as we have them or you can contact your Ford Dealer for additional assistance.

EMPOWERING.

YOUR CHOICE OF 4 WAYS TO GO.

With a variety of available engines, the Ford Escape® SUV is geared to suit your driving style. Turbocharged EcoBoost® engine models feature plenty of horsepower and torque for making the most of every ride. They also include Auto Start-Stop Technology that can help reduce fuel consumption and vehicle tailpipe emissions when the vehicle is fully stopped.

Hybrid models use a 2.5L Atkinson-cycle I-4 engine and an electric traction motor for maximum range and fuel economy. The Plug-in Hybrid models have an EPA-estimated range of 481 miles!^{1,2} You can drive the Plug-in Hybrid in EV (Electric Vehicle) mode when the battery is charged, and continue seamlessly on your way as the vehicle switches to gas power when needed.

Whichever model you choose, you'll be able to move from Park to Reverse to Drive with the simple turn of the finely tuned rotary gear shift dial, standard on every 2022 Escape.



TITANIUM. Star White Metallic Tri-coat.⁵ Available equipment.

1. Range calculation based on an 11.1-gallon tank (excludes reserve tank capacity), EPA-estimated charge depleting electric range of 37 miles and combined city/highway label rating of 40 mpg. Actual range varies with conditions such as external environment, vehicle use, vehicle maintenance, lithium-ion battery age and state of health. **2.** Horsepower, torque and EPA-estimated fuel economy ratings are independent attributes and may not be achieved simultaneously. **3.** Horsepower and torque ratings based on premium fuel per SAE J1349® standard. Your results may vary. **4.** Calculated via combined performance of the engine and electric motor with peak battery power. The calculations utilize SAE J1349 engine results and Ford electric motor dyno testing. Your results may vary. **5.** Additional charge.

1.5L ECOBOOST

181 MAX. HP^{2,3}

190 LB.-FT. MAX. TORQUE^{2,3}

Standard on S, SE and SEL
(FWD or available AWD)

2.0L ECOBOOST

250 MAX. HP^{2,3}

280 LB.-FT. MAX. TORQUE^{2,3}

Available on SEL and Titanium (AWD only)

HYBRID

200 HP^{2,4}

COMBINED SYSTEM NET

Available on SE and SEL;
Standard on Titanium
(FWD or available AWD)

PLUG-IN HYBRID

221 HP^{2,4}

COMBINED SYSTEM NET

Available on SE, SEL and Titanium
(FWD only)





CAPABILITY. SELECT YOUR DRIVE MODE.

The Ford Escape® SUV lets you create the drive experience you desire, or the one that conditions demand, with easy-to-use Selectable Drive Modes. Choose your mode and the system adjusts traction control, steering, pedal response, and available Intelligent AWD to help provide a remarkable driving experience. 3D animations on the available 12.3" digital instrument cluster change based on the standard drive mode you select – Normal, ECO, Sport, Slippery, or Deep Snow/Sand.

In addition to the standard drive modes, Plug-in Hybrid models feature 4 EV modes, which allow you to decide how you want to use the electric power. In Auto EV, the vehicle decides whether to run on gas or electric power. EV Now mode is for all-electric operation. EV Later preserves plug-in energy for later use. In EV Charge mode, drivers can continue to charge the battery while driving, and generate electric-only miles to use later, such as during city driving.



(Left) TITANIUM. Rapid Red Metallic Tinted Clearcoat.¹ Available equipment.
(Right) SE. Iced Blue Silver Metallic. Available SE Sport Appearance Package. Available equipment.
1. Additional charge.



AMENITIES. TAKE COMFORT IN CONTROL.

Every Ford Escape® SUV offers a roomy front-row experience. Available heated sport contour front bucket seats and an available heated steering wheel offer extra comfort on chilly days. The available head-up display¹ projects vehicle speed and other vital information onto a 6" wide screen just above the steering wheel, while the available 12.3" digital instrument cluster offers a configurable display and 3D animations. There's also an available 10-speaker B&O® Sound System that features an Externally Coupled Subwoofer that saves both weight and space while still delivering the powerful sound you expect.



(Left) TITANIUM. Available Titanium Elite Package.
(Right) TITANIUM. Sandstone ActiveX™ Trimmed Seats. Available equipment.
1. Don't drive while distracted. See Owner's Manual for details and system limitations.

DESIGNED FOR EVERY DAY. **VERSATILITY.**

Whatever excitement is on your agenda, the Ford Escape® SUV is built to help you enjoy it. Want to seat up to 5 adults? Do it comfortably with a total passenger volume of up to 104 cu. ft.¹ Taking an overnight trip? You can fold both sections of the 60/40 split rear seats down for up to 65.4 cu. ft.^{1,2} of max. cargo space. To help keep items out of sight, the available easy-access cargo shade can be raised and lowered along with the available hands-free, foot-activated power liftgate. Need to carry a full-size pet crate?³ Just slide the rear seats fully forward for up to 37.5 cu. ft.^{1,2} of cargo space behind them.



TITANIUM. Sandstone ActiveX™ Trimmed Seats. Available equipment.

1. Non-hybrid models. **2.** Cargo and load capacity limited by weight and weight distribution. **3.** Can accommodate dog crate up to 36" L x 23" W x 25" H.

Front seat belts not shown in order to provide a clear view of the vehicle interior.



LATITUDE.

SLIDE SEATS BACK TO RELAX.

The Ford Escape® SUV lets you treat friends and family to the surprising freedom of sliding rear seats for lots of leg room. Passengers will benefit from available rear-window privacy glass, as well as from the rear seat backs, which allow them to recline while taking a break. It's easy to keep your devices charged and ready for capturing memories, too. Escape models offer up to 4 available smart-charging USB ports as well as up to 3 available 12V powerpoints. Plus, you and all of your passengers can enjoy the natural lighting and fresh air offered by the available power, panoramic Vista Roof.®



TITANIUM. Sandstone ActiveX™ Trimmed Seats. Available equipment.



CONNECTIONS. NURTURE YOURS WITH TECH.

Staying in touch on the go is easy in the Ford Escape® SUV. Voice-activated SYNC®¹ puts just what you need on the tip of your tongue – or right at your fingertips. SYNC AppLink®² lets you use voice commands to control favorite apps on your paired smartphone or other mobile devices. Available SYNC 3 even lets you use Siri® voice recognition software, Google Assistant™ virtual personal assistant, or the Ford+Alexa™ App³ to stay connected while keeping your eyes on the road – and hands on the wheel.

Complimentary remote features like start/stop, lock/unlock, schedule a start, locate your vehicle, and vehicle status checks are easy to access through the FordPass™ App⁴ with standard FordPass Connect⁴ Recharge without a cord using the available wireless charging pad⁵ Plus, connect up to 10 devices at once – inside or up to 50' away – using FordPass Connect⁴ with 4G LTE Wi-Fi hotspot capability.⁶

SYNC

- Standard on S*
- 4.2" LCD screen
 - SYNC AppLink
 - 1 smart-charging USB port

SYNC 3

- Standard on SE, SEL and Titanium*
- 8" LCD touchscreen
 - SYNC AppLink
 - Apple CarPlay® compatibility⁷
 - Android Auto™ compatibility⁷

- SiriusXM® with 3-month Platinum Plan trial subscription⁸
- 2 smart-charging USB ports
- Available Voice-Activated Touchscreen Navigation System with SiriusXM Traffic and Travel Link®^{8,9}



SCAN TO LEARN MORE
or visit Ford.com/SYNC
Data rates may apply.

TITANIUM. Ebony and Sandstone leather-trimmed interior. Available Titanium Elite Package. Available equipment.

1. Don't drive while distracted or while using handheld devices. Use voice-operated systems when possible. Some features may be locked out while the vehicle is in gear. Not all features are compatible with all phones. **2.** Commands may vary by phone and AppLink software. **3.** Requires available SYNC 3 AppLink. Don't drive while distracted or while using handheld devices. Use voice controls. Certain Alexa functionality is dependent on smart phone and home technology. **4.** FordPass Connect, the FordPass App, and complimentary Connected Service are required for remote features (see FordPass Terms for details). Connected service and features depend on compatible AT&T network availability. Evolving technology/cellular networks/vehicle capability may limit functionality and prevent operation of connected features. Connected service excludes Wi-Fi hotspot. **5.** Qi wireless charging may not be compatible with all mobile phones. **6.** Wi-Fi hotspot includes complimentary wireless data trial that begins upon AT&T activation and expires at the end of 3 months or when 3GB of data is used, whichever comes first. To activate, go to www.att.com/ford. **7.** Requires phone with active data service and compatible software. SYNC 3 does not control 3rd-party products while in use. 3rd parties are solely responsible for their respective functionality. **8.** Trial length and service availability may vary by model, model year or trim. Radio features, content and display may vary by vehicle. Some features may not be available while driving. Your trial subscription will automatically stop at the end of your trial period. Subscriptions offered and sold separately by SiriusXM for continued use after trial. Services are subject to the SiriusXM Customer Agreement and Privacy Policy available at siriusxm.com which includes complete terms and how to cancel which includes online methods or calling 1-866-635-2349. All fees, content and features are subject to change. **9.** Availability varies by model. See Specifications in this brochure for details.





25
MPH

25
MPH

INTELLIGENT ADAPTIVE CRUISE CONTROL

INCLUDES SPEED SIGN RECOGNITION¹

Once activated, this available system can detect and automatically adjust to speed limit signs along your route.¹ It can also bring the vehicle to a stop if traffic ahead has stopped or slowed. When things clear, your set speed is resumed.² The system's Lane Centering feature even scans lane markings to help you keep your vehicle centered between the lines.¹

MAKE YOUR WAY. CONFIDENTLY.

Changing lanes. Keeping your distance. Parallel and perpendicular parking. Our extensive well-rounded collection of standard and available Ford Co-Pilot360™ Technology features can help you with these everyday situations and so many more. Our advanced technologies are about supplementing your driving skills.¹ Helping you feel confidently in command on the road.

FORD CO-PILOT360™ TECHNOLOGY

FORD CO-PILOT360

Standard on every 2022 Ford Escape® SUV

- Pre-Collision Assist with Automatic Emergency Braking (AEB)
- BLIS® (Blind Spot Information System) with Cross-Traffic Alert
- Lane-Keeping System
- Auto High-Beam Headlamps
- Rear View Camera
- Autolamp (Automatic On/Off Headlamps)
- Post-Collision Braking

AVAILABLE FEATURES

- Active Park Assist 2.0
Standard on Titanium Elite Package
- Front Parking Sensors
Standard on Titanium
- Rear Parking Sensors
Standard on SEL and Titanium

FORD CO-PILOT360 ASSIST+

*Standard on Titanium;
Available on SE and SEL*

- Intelligent Adaptive Cruise Control with Stop-and-Go and Lane Centering includes Speed Sign Recognition
- Evasive Steering Assist
- Voice-Activated Touchscreen Navigation System

- Rain-Sensing Windshield Wipers
Standard on Titanium
- Remote Start System
*Standard on SEL and Titanium;
Available on S and SE*

SE. Rapid Red Metallic Tinted Clearcoat.³ Available SE Sport Appearance Package. Available equipment.

1. Driver-assist features are supplemental and do not replace the driver's attention, judgment and need to control the vehicle. It does not replace safe driving. See Owner's Manual for details and limitations. **2.** If vehicle is stopped for more than 3 seconds, driver must intervene and press "RES" button or accelerator pedal to resume system operation. **3.** Additional charge.



SCAN TO LEARN MORE
or visit
[Ford.com/Technology](https://ford.com/technology)
Data rates may apply.

ROAD-TRIP READY. **INSPIRATION.**

Since its conception, the Ford Escape® SUV has epitomized the fun-loving freedom of spontaneous road trips. For an engaging driving experience, Hybrid and Plug-in Hybrid models feature an eCVT transmission with electric launch. Gas-only models utilize an 8-speed automatic transmission for smooth, responsive performance. And the electric power-assisted steering provides light, responsive steering while parking, and confident control at higher speeds. These and a myriad of other details are purposefully combined to help Escape empower your urban adventures and back-road getaways alike. Lifting your spirits at every turn.



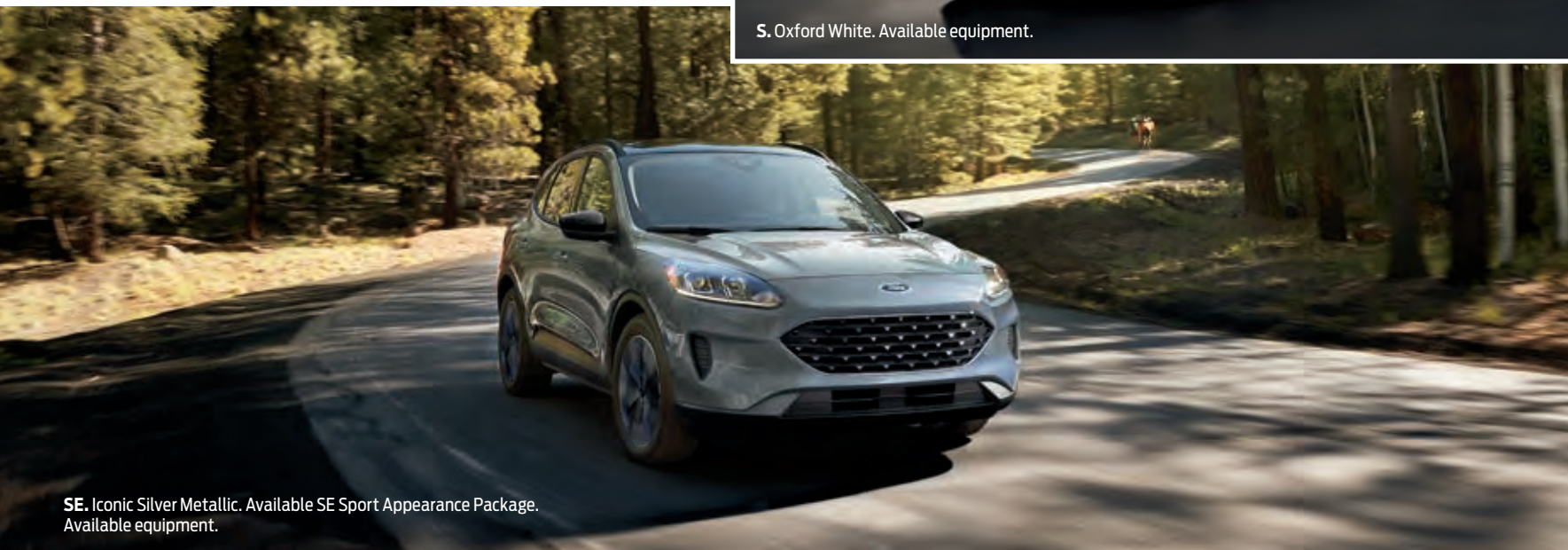
SE. Iced Blue Silver Metallic. Available SE Sport Appearance Package. Available equipment.

S

Memory making starts here: in the Ford Escape® S model. A new adventure begins every time you turn the rotary gear shift dial to “D.” Whether it’s a 1.5L EcoBoost® engine with front-wheel drive (FWD) or available Intelligent AWD, Selectable Drive Modes are at the ready. Starting to rain? Switch to the “Slippery” drive mode for increased control. Need to take a call? SYNC® voice-activated technology¹ lets you do it without touching your phone.



S. Oxford White. Available equipment.



SE. Iconic Silver Metallic. Available SE Sport Appearance Package. Available equipment.

SE SPORT APPEARANCE PACKAGE

Express yourself with the available SE Sport Appearance Package. It gives your SE standout looks, starting with 19" machined-face Ebony-painted aluminum wheels. The front and rear bumpers, and upper window and beltline moldings are all black. High-gloss black caps set off the sideview mirrors. And a gloss black 5-bar grille with a chrome surround leads the way to fun.

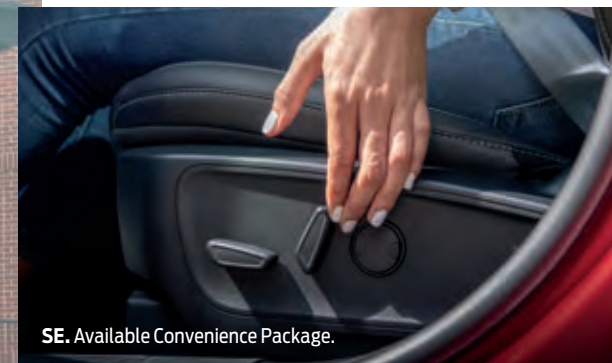
SE

Escape SE models offer you options: Plug-in Hybrid, Hybrid (AWD available), or 1.5L EcoBoost (AWD available). Every SE has voice-activated SYNC 3 with the 8" LCD capacitive touchscreen.¹ The available Convenience Package gives you an 8-way power driver's seat, LED signature lighting, a power liftgate and more. The available Cold Weather Package adds a few creature comforts like a heated steering wheel and heated front seats.



SE. Rapid Red Metallic Tinted Clearcoat.² Available equipment.

¹. Don't drive while distracted or while using handheld devices. Use voice-operated systems when possible. Some features may be locked out while the vehicle is in gear. Not all features are compatible with all phones. ². Additional charge.



SE. Available Convenience Package.



SE. Available Cold Weather Package.

SEL

The Ford Escape® SEL model offers you a full range of available powertrains: Plug-in Hybrid, Hybrid (AWD available), 2.0L EcoBoost® engine (AWD required), or 1.5L EcoBoost (AWD available). Plug-in Hybrid models come with a standard 120V charging cord and are easy to recharge at home. Or at any of the charging stations in the Ford BlueOval™ Charge Network – North America's largest public charging network – that makes charging on the go simple. Every SEL model gets premium ActiveX™ Trimmed Seats. Plus, the available Technology Package adds a 10-way power driver's seat, hands-free, foot-activated liftgate and more.



SEL PLUG-IN HYBRID. Iconic Silver Metallic.



SEL. Available power, panoramic Vista Roof.®



SEL. Iconic Silver Metallic. Available equipment.
1. Additional charge.

SEL STEALTH PACKAGE

Make your Escape even more sleek with this available package only for SEL 2.0L models. Ebony ActiveX Seating Material is set off by Miko® sueded cloth inserts, and you get logoed front and rear floor mats. A gloss black 5-bar grille with chrome surround, 19" machined-face Ebony-painted aluminum wheels, and lots of black accents – including the Ford Oval badges – give the exterior its dramatic stance.



SEL. Rapid Red Metallic Tinted Clearcoat!
Available SEL Stealth Package. Available equipment.



SEL. Available SEL Stealth Package.



TITANIUM. Available equipment.



TITANIUM HYBRID. Star White Metallic Tri-coat.¹ Available equipment.

TITANIUM

Available in Plug-in Hybrid, Hybrid (AWD available), or 2.0L EcoBoost® engine (AWD only), Ford Escape® Titanium models offer sophisticated styling and upscale amenities. Standard features include: 12.3" digital instrument cluster; hands-free, foot-activated liftgate; and Ford Co-Pilot360™ Assist+ with voice-activated navigation. Titanium is well-equipped to help you get away from it all.

TITANIUM ELITE PACKAGE

The striking interior of the available Titanium Elite Package elevates the standard Titanium heated sport contour front bucket seats with Ebony and Sandstone leather trim. With this unique package, you'll also enjoy Active Park Assist 2.0; a head-up display; a wireless charging pad;² a 10-speaker B&O® Sound System and more. Finished with a chrome 5-bar grille and chrome surround, Silver-painted skid plates, and 19" Luster Nickel-painted aluminum wheels, this special Escape truly shines.



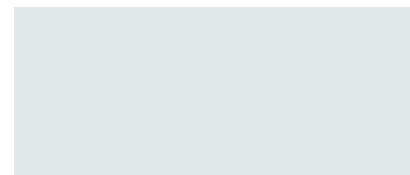
TITANIUM. Star White Metallic Tri-coat.¹ Available Titanium Elite Package. Available equipment.

1. Additional charge. 2. Qi wireless charging may not be compatible with all mobile phones.



TITANIUM. Available Titanium Elite Package. Available equipment.

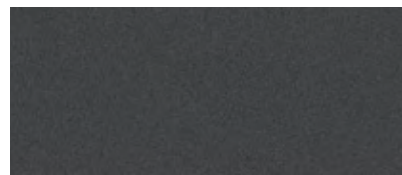
EXTERIOR



1 Oxford White



2 Agate Black Metallic



3 Carbonized Gray Metallic



4 Iconic Silver Metallic



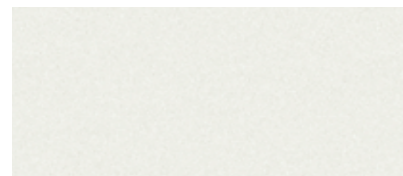
5 Iced Blue Silver Metallic



6 Atlas Blue Metallic



7 Stone Blue Metallic¹



8 Star White Metallic Tri-coat¹

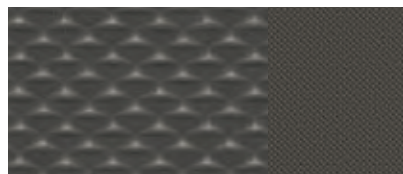


9 Rapid Red Metallic Tinted Clearcoat¹

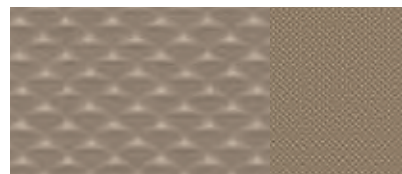
INTERIOR



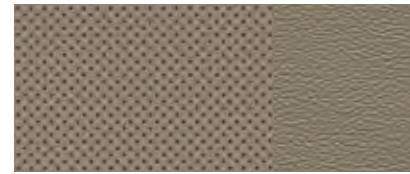
Dark Earth Gray Cloth / 1-7
S



Dark Earth Gray Cloth / 1-9
SE



Sandstone Cloth / 1-9
SE



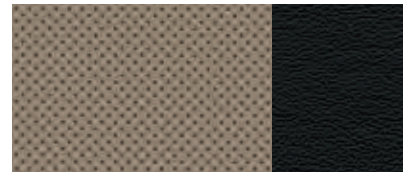
Sandstone ActiveX™
with Mini-Perforated Inserts
SEL / 1-9 **Titanium** / 2-9



Ebony ActiveX
with Mini-Perforated Inserts
SEL / 1-9 **Titanium** / 2-9



Ebony ActiveX
with Miko® Sueded Cloth Inserts / 1-9
SEL Stealth Package



Ebony Leather
with Sandstone Mini-Perforated Inserts / 2-9
Titanium Elite Package, Titanium Premium Package

WHEELS



17" Steel with Sparkle Silver-Painted Covers
S Standard



17" Shadow Silver-Painted Aluminum
SE with EcoBoost® engines, SE Hybrid Standard
S Optional



18" Machined-Face Ebony-Painted Aluminum
with Painted Pockets
SE, SEL, Titanium with Plug-in Hybrid Standard



18" Machined-Face Aluminum with
Dark Stainless-Painted Pockets
SEL with EcoBoost engine, SEL Hybrid Standard



19" Machined-Face Ebony-Painted Aluminum
SE Sport Appearance Package, SEL Stealth AWD Package Included



19" Machined-Face Aluminum with
Dark Tarnish-Painted Pockets
Titanium with 2.0L EcoBoost engine, Titanium Hybrid Standard



19" Luster Nickel-Painted Aluminum
Titanium Elite Package Included

DIMENSIONS & CAPACITIES

Exterior (in.)	
Wheelbase	106.7
Length	180.5
Height	66.1
Width – Mirrors folded	78.7
Width – Including mirrors	85.6

Interior (in.)	Front/Rear
Head room	40.0/39.3
Leg room (max.)	42.4/40.7
Hip room	55.2/53.3
Shoulder room	57.6/56.0

Capacities (cu. ft.)	
Passenger volume	104.0
Cargo volume behind front seats	65.4
Cargo volume behind rear seats	37.5 (max.)

Fuel Tank (gal.)	
1.5L EcoBoost	14.8/15.7 (FWD/AWD)
2.0L EcoBoost	15.7
2.5L Hybrid	14.3
2.5L Plug-in Hybrid	11.1

Dimensions and capacities shown for base trim level with FWD. Dimensions and capacities may vary by model.

Colors are representative only. See your dealer for actual paint/trim options. **1.** Additional charge.

STANDARD FEATURES

MECHANICAL

120V charging cord (PHEV models)
Active grille shutters
Electric power-assisted steering
Front-wheel drive (FWD)
Power disc brakes with Anti-Lock Brake System (ABS)
Rotary gear shift dial
Selectable Drive Modes – Normal, ECO, Sport, Slippery, and Deep Snow/Sand
Tire inflator and sealant kit
Torque Vectoring Control

FORD CO-PILOT360™ TECHNOLOGY

Auto Hold
Autolamp (Automatic On/Off Headlamps)
Ford Co-Pilot360: Pre-Collision Assist with Automatic Emergency Braking (AEB); BLIS® (Blind Spot Information System) with Cross-Traffic Alert; Lane-Keeping System; Auto High-Beam Headlamps; and Rear View Camera
Post-Collision Braking

COMFORT & CONVENIENCE

60/40 split-fold rear seats with slide and recline
Cargo tie-down hooks
Configurable daytime running lamps
Easy Fuel® capless fuel filler
Illuminated Entry System
Manual-tilt/-telescoping steering column
Particulate air filter
Rear-window defroster
Steering wheel-mounted cruise and audio controls

1. FordPass Connect, the FordPass App, and complimentary Connected Service are required for remote features (see FordPass Terms for details). Connected service and features depend on compatible AT&T network availability. Evolving technology/cellular networks/vehicle capability may limit functionality and prevent operation of connected features. Connected service excludes Wi-Fi hotspot. **2.** Wi-Fi hotspot includes complimentary wireless data trial that begins upon AT&T activation and expires at the end of 3 months or when 3GB of data is used, whichever comes first. To activate, go to www.att.com/ford. **3.** Always wear your safety belt and secure children in the rear seat. **4.** Horsepower and torque ratings based on premium fuel per SAE J1349® standard. Your results may vary. **5.** Horsepower, torque and towing are independent attributes and may not be achieved simultaneously. **6.** Calculated via combined performance of the engine and electric motor with peak battery power. The calculations utilize SAE J1349 engine results and Ford electric motor dyno testing. Your results may vary. **7.** Trial length and service availability may vary by model, model year or trim. Radio features, content and display may vary by vehicle. Some features may not be available while driving. Your trial subscription will automatically stop at the end of your trial period. Subscriptions offered and sold separately by SiriusXM for continued use after trial. Services are subject to the SiriusXM Customer Agreement and Privacy Policy available at siriusxm.com which includes complete terms and how to cancel which includes online methods or calling 1-866-635-2349. All fees, content and features are subject to change. **8.** Max. towing varies based on cargo, vehicle configuration, accessories and number of passengers. **9.** Do not place additional floor mats or any other covering on top of the original floor mats. **10.** Restrictions may apply. See dealer for details. **11.** Consult Owner's Manual for details on roof-rack load limits. **12.** Ford Licensed Accessory.

APPEARANCE

Chrome dual exhaust tips
LED taillamps

CONNECTIVITY & ENTERTAINMENT

FordPass™ Connect ¹ with 4G LTE Wi-Fi hotspot capability ²
--

SAFETY & SECURITY

Personal Safety System™ for driver and front passenger includes dual-stage front airbags ³
Driver's knee airbag ³
Front-seat side airbags ³
Safety Canopy® System with side-curtain airbags ³ and rollover sensor
AdvanceTrac™ with RSC® (Roll Stability Control™)
Curve Control
Front height-adjustable shoulder safety belts
MyKey® technology to help encourage responsible driving
SecuriLock® Passive Anti-Theft System
SOS Post-Crash Alert System™
Tire Pressure Monitoring System (TPMS; excludes spare, when equipped)

S	SE	SEL	TITANIUM
S	S	S	ENGINES & TRANSMISSIONS 1.5L EcoBoost® engine with Auto Start-Stop Technology, 8-speed automatic transmission, 181 hp @ 6,000 rpm ^{4,5} and 190 lb.-ft. of torque @ 3,000 rpm ^{4,5}
	0	0	2.5L Atkinson-Cycle I-4 Hybrid (HEV) with Electric Continuously Variable Transmission (eCVT) and 200 hp ^{5,6} (combined system net)
	0	0	2.5L Atkinson-Cycle I-4 Plug-in Hybrid (PHEV) with Electric Continuously Variable Transmission (eCVT) and 221 hp ^{5,6} (combined system net)
	0	0	2.0L EcoBoost engine with Auto Start-Stop Technology (requires Intelligent AWD System), 8-speed automatic transmission, 250 hp @ 5,500 rpm ^{4,5} and 280 lb.-ft. of torque @ 3,000 rpm ^{4,5}
S	S	S	MECHANICAL Selectable Drive Modes – Normal, ECO, Sport, Slippery, and Deep Snow/Sand (EcoBoost, HEV and PHEV)
	S	S	Selectable Drive Modes – Auto EV, EV Now, EV Later, and EV Charge (PHEV models)
	S	S	Front-wheel drive (FWD)
	S	S	Neutral towing capability (HEV and PHEV)
	0	0	Intelligent AWD System (not available on PHEV models)
	0	0	Mini spare wheel and tire (replaces tire inflator and sealant kit)
	0	0	FORD CO-PILOT360™ TECHNOLOGY Ford Co-Pilot360 Assist+: Intelligent Adaptive Cruise Control with Stop-and-Go and Lane Centering (includes Speed Sign Recognition); Evasive Steering Assist; and Voice-Activated Touchscreen Navigation System with pinch-to-zoom capability (includes SiriusXM® Traffic and Travel Link® with 5-year subscription ⁷)
	S	S	Rear Parking Sensors
		P	Active Park Assist 2.0
		S	Front Parking Sensors
		S	Rain-Sensing Windshield Wipers
S			APPEARANCE Black grille surround, beltline moldings, upper window moldings, exterior door handles and power sideview mirrors
	S		Chrome grille surround and upper window moldings; and body-color exterior door handles and black power sideview mirrors
	S	S	Chrome grille surround and upper window moldings; and body-color exterior door handles and power sideview mirrors
S	S		Halogen headlamps
	S	S	Privacy glass on all rear windows
	S	S	Fog lamps (LED on Titanium)
	P	S	Halogen projector-beam headlamps with LED signature lighting
	0	0	Black roof-rack side rails

S	SE	SEL	TITANIUM
		S	Chrome beltline moldings
		S	LED headlamps
			COMFORT & CONVENIENCE 6-way manual driver seat and 4-way manual front-passenger seat
S	S		12V powerpoints (3)
S	S		Power windows with driver's one-touch-down feature
	S	S	12V powerpoints (2)
	S	S	6.5" LCD instrument panel screen (HEV and PHEV models only)
	S/p	S	Dual-zone electronic automatic temperature control (standard on SE HEV and PHEV models only)
	S	S	Electronic fuel door release (HEV and PHEV models only)
	S	S	Front-passenger seat back map pocket
	S	S	Illuminated visor mirrors
	S	S	Intelligent Access with push-button start
	S	S	Smart-charging USB ports for rear seat (1 USB-A and 1 USB-C)
	P	S	10-way power driver's seat with power lumbar and recline
	P	S	12.3" LCD digital instrument cluster
	P	S	Hands-free, foot-activated liftgate
	P	S	Memory feature for power driver's seat and sideview mirrors
	P	S	Heated front seats
	P	S	Heated sideview mirrors
	P	S	Heated steering wheel
	P	S	Rear-seat center armrest with 2 cupholders
	P	S	Power liftgate
	S	S	Power windows with driver's one-touch-up/-down feature
	S	S	SecuriCode® invisible keypad
	S	S	Sport contour front bucket seats
0	0/p	S	Remote Start System
		S	6-way power front-passenger's seat
		S	Ambient lighting (single color)
		S	Auto-dimming rearview mirror
		S	Universal garage door opener
	P	S	8-way power driver's seat with power lumbar and recline
	P		Electronic automatic temperature control
	0	0	Power, panoramic Vista Roof® (includes black roof-rack side rails; not available on SE PHEV)
		P	Leather-wrapped, heated steering wheel

S	SE	SEL	TITANIUM
		S	SAFETY & SECURITY Pedestrian Alert Sounder (HEV and PHEV models only)
		S	Perimeter alarm
S	S	S	CONNECTIVITY & ENTERTAINMENT AM/FM stereo with 6 speakers and MP3 capability
S			SYNC® Voice Recognition Communications System with 4.2" LCD screen in center stack, 911 Assist®, AppLink®, and 1 smart-charging USB port
S	S	S	SiriusXM with 3-month Platinum Plan trial subscription ⁷
S	S	S	SYNC 3 with 8" LCD capacitive touchscreen in center stack, 911 Assist, AppLink, Apple CarPlay® compatibility, Android Auto™ compatibility, and 2 smart-charging USB ports
	P	P	B&O® Sound System with 10 speakers including a subwoofer, and HD Radio™ Technology
		0	FUNCTIONAL PACKAGES Cold Weather Package: heated front seats, sideview mirrors and premium-wrapped steering wheel; electronic automatic temperature control; and Remote Start System
		0	Convenience Package: 8-way power driver's seat with power lumbar and recline; dual-zone electronic automatic temperature control; halogen projector-beam headlamps with LED signature lighting; power liftgate; premium-wrapped steering wheel; and rear-seat center armrest with 2 cupholders
		0	Technology Package: B&O Sound System with 10 speakers including a subwoofer; 12.3" LCD digital instrument cluster; 10-way power driver's seat with power lumbar and recline; memory feature for power driver's seat and sideview mirrors; wireless charging pad; and hands-free, foot-activated liftgate
	0	0	Class II Trailer Tow Package (3,500 lbs. max. ⁸ with 2.0L; 1,500 lbs. max. ⁸ with 2.5L; not available with 1.5L)
	0		TRIM PACKAGES SE Sport Appearance Package: 19" machined-face Ebony-painted aluminum wheels; gloss black 5-bar grille with chrome surround; black bumper; gloss black sideview mirror caps; and black upper window moldings (not available with 2.5L PHEV)
	0		SEL Stealth AWD Package: 19" machined-face Ebony-painted aluminum wheels; gloss black 5-bar grille with chrome surround; black skid plates; high-gloss black sideview mirror caps, badging and upper window moldings; Ebony ActiveX™ Seating Material with Miko® sueded cloth inserts; and front and rear carpeted floor mats with embroidered Escape logo (requires 2.0L engine and AWD)

S	SE	SEL	TITANIUM
			0 Titanium Elite Package: 19" Luster Nickel-painted aluminum wheels; Active Park Assist 2.0; B&O Sound System with 10 speakers including a subwoofer, and HD Radio Technology; chrome 5-bar grille with chrome surround; Silver-painted front and rear skid plates; two-toned leather-trimmed seating surfaces with mini-perforated inserts; leather-wrapped steering wheel; front and rear carpeted floor mats with embroidered Escape logo; head-up display; and wireless charging pad (not available in PHEV)
			0 Titanium Premium Package: Active Park Assist 2.0; B&O Sound System with 10 speakers including a subwoofer, and HD Radio Technology; two-toned leather-trimmed seating surfaces with mini-perforated inserts; leather-wrapped steering wheel; front and rear carpeted floor mats with embroidered Escape logo; head-up display; and wireless charging pad (PHEV only)
			OPTIONS Remote Start System (long-range with confirmation; includes 2 key fobs)
	0	0	Cargo mat
	0	0	Easy-Access Cargo Shade
	0	0	Engine block heater
	0	0	Front and rear floor liners (deletes standard floor mats; not available with SEL Stealth AWD, Titanium Elite or Titanium Premium Packages)
	0	0	Front and rear floor liners (includes standard floor mats) ⁹
	0	0	Mini spare wheel and tire
	0	0	Splash guards
	0	0	Wheel-locking lug nuts
	0	0	Cargo organizer – Soft-sided cooler bag with adjustable carrying strap and Ford logo
	0	0	Cargo organizer – Soft-sided standard or soft-sided large, folding, with Ford logo
	0	0	Center console in-vehicle safe by Console Vault with coded lock
	0	0	First Aid Kit
	0	0	Roadside Assistance Kit
	0	0	Outfitters Bike – FrontLoader: ^{10,11} 2 Yakima® FrontLoaders (includes locks), black roof-rail crossbars, cargo mat, and front and rear floor liners (without carpeted mats) ¹²
	0	0	Outfitters Cargo – Off Grid: ^{10,11} Yakima OffGrid, black roof-rail crossbars, cargo mat, and front and rear floor liners (without carpeted mats) ¹²
	0	0	Outfitters Cargo – SkyBox: ^{10,11} Yakima SkyBox 16, black roof-rail crossbars, cargo mat, and front and rear floor liners (without carpeted mats) ¹²
	0	0	Roof-rail crossbars (not available with power, panoramic Vista Roof)

S: STANDARD

O: OPTIONAL

P: PACKAGED



TITANIUM in Star White Metallic Tri-coat¹ accessorized with molded splash guards, roof crossbars,^{2,3} and roof-mounted cargo box^{2,3}



A. Roof-mounted cargo basket^{2,3}

B. Cargo area protector

C. Floor liners

D. Dash cam systems²

SHOP THE COMPLETE COLLECTION | accessories.ford.com

Ford Credit® Get the ride you want. Whether you plan to lease or buy, Ford Credit has the option that's right for you. Ask your Ford Dealer for details or visit us online at ford.com/finance.

Ford Insure. Insurance that lets you earn discounts for safe driving, offering a maximum discount of 40% off your auto insurance. Ford Insure works with your 2022 Escape® to gauge driving habits and calculate a discount based on how you drive. Visit fordinsure.com to learn more.

American Road Services Company LLC (a Ford affiliate) is the licensed insurance agency offering Ford Insure and is underwritten by Nationwide Mutual Insurance Company and affiliates. Home Office: Columbus, OH. Ford Motor and Ford Credit are not insurance companies or agents. Subject to underwriting guidelines, review and approval. Details and availability varies; program criteria differ in California. Discounts do not apply to all coverage elements; actual savings vary by state, coverage selections, rating factors and policy changes.

Ford Licensed Accessories (FLA) are warranted by the accessory manufacturer's warranty. FLA are designed and developed by the accessory manufacturer and have not been designed or tested to Ford Motor Company engineering requirements. Contact your Ford Dealer for details and/or a copy of all limited warranties.

Ford Original Accessories. They're warranted for whichever provides you the greatest benefit: 24 months/unlimited mileage, or the remainder of your Bumper-to-Bumper 3-year/36,000-mile (whichever comes first) New Vehicle Limited Warranty.

Ford Protect™ Extended Service Plans. Whether you purchase or lease your Ford vehicle, insist on genuine Ford Protect extended service plans. Ford Protect has a variety of plans to give you peace-of-mind protection whether you want vehicle component or maintenance coverage. Plus, they are fully backed by Ford and honored at all Ford dealerships in the U.S., Canada and Mexico. When you visit your dealer, insist on genuine Ford Protect extended service plans.

New Vehicle Limited Warranty. We want your Ford Escape ownership experience to be the best it can be. Under this warranty, your new vehicle comes with 3-year/36,000-mile bumper-to-bumper coverage (whichever comes first), 5-year/60,000-mile Powertrain Warranty coverage (whichever comes first), 5-year/60,000-mile safety restraint coverage (whichever comes first), and 5-year/unlimited-mile corrosion perforation (aluminum panels do not require perforation) coverage (whichever comes first) – all with no deductible. Escape unique electric components are covered during the Hybrid/Electric Unique Component Coverage, which lasts for 8 years or 100,000 miles (whichever comes first). Please ask your Ford Dealer for a copy of these limited warranties.

Roadside Assistance. Covers your vehicle for 5 years or 60,000 miles (whichever comes first), so you have the security of knowing that help may be only a phone call away should you run out of fuel, lock yourself out of the vehicle or need a winch back to a paved road, a battery jump start or towing. Your Ford Dealer can provide complete details on all of these advantages.

1. Additional charge. 2. Ford Licensed Accessory. 3. Consult Owner's Manual for details on roof-rack load limits.

Ford and Oval Device, 911 Assist, ActiveX, AdvanceTrac, AppLink, BLIS, BlueOval, Easy Fuel, EcoBoost, Escape, Ford Co-Pilot360, Ford Credit, Ford Protect, FordPass, FordPass. Built to Keep You Moving., MyKey, Personal Safety System, Roll Stability Control, RSC, Safety Canopy, SecuriCode, SecuriLock, SOS Post-Crash Alert System, SYNC, Vista Roof and related marks are trademarks of Ford Motor Company.

Android Auto and Google are trademarks of Google LLC. Alexa and all related logos are trademarks of amazon.com, Inc. or its affiliates. Apple CarPlay and Siri are trademarks of Apple Inc., registered in the U.S. and other countries. BANG & OLUFSEN and B&O are registered trademarks of Bang & Olufsen Group. Licensed by Harman Becker Automotive Systems Manufacturing Kft. All rights reserved. HD Radio is a proprietary trademark of iBiquity Digital Corporation. Miko is a registered trademark of Miko s.r.l. SiriusXM, Pandora and all related logos are trademarks of Sirius XM Radio Inc. Yakima is a registered trademark of Yakima Products Inc.

Comparisons based on competitive models (Escape class is Non-Premium Compact Utility; Escape Hybrid class is Non-Premium Compact Utility – Hybrid; Escape Plug-in Hybrid class is Non-Premium Compact Utility – Plug-in Hybrid; overall length for all under 185.2" and over 177.0"), publicly available information and Ford certification data at time of release. Vehicles may be shown with optional and aftermarket equipment. Features may be offered only in combination with other options or subject to additional ordering requirements/limitations. Dimensions shown may vary due to optional features and/or production variability. Information is provided on an "as is" basis and could include technical, typographical or other errors. Ford makes no warranties, representations, or guarantees of any kind, express or implied, including but not limited to, accuracy, currency, or completeness, the operation of the information, materials, content, availability, and products. Ford reserves the right to change product specifications, pricing and equipment at any time without incurring obligations. Your Ford Dealer is the best source of the most up-to-date information on Ford vehicles.

EPA-ESTIMATED RATINGS

Actual mileage will vary.

1.5L ECOBOOST® ENGINE

FWD 28 CITY MPG
34 HWY MPG
30 COMB MPG

AWD 26 CITY MPG
31 HWY MPG
28 COMB MPG

2.0L ECOBOOST

AWD 22 CITY MPG
31 HWY MPG
26 COMB MPG

2.5L I-4 HYBRID

FWD 44 CITY MPGe
37 HWY MPGe
41 COMB MPGe

AWD 43 CITY MPGe
37 HWY MPGe
40 COMB MPGe

2.5L I-4 PLUG-IN HYBRID

FWD 43 CITY MPGe
38 HWY MPGe
40 COMB MPGe



From day one, we had the future in mind. And over 118 years later, we continue that tradition of innovation. Ford Co-Pilot360™ Technology is helping push us closer to autonomous driving. The latest generation of voice-activated SYNC® fosters untethered communication. And our fully electric vehicles – the all-new 2022 Ford F-150 Lightning® pickup and the Mustang Mach-E® SUV – are charging across America.

We've always had our mind on the future. Now we're building it.

22ESCPDF

©2021 Ford Motor Company



FordPass. Built to Keep You Moving.™

Meet FordPass.™ The app¹ that lets you access complimentary remote features including start/stop and lock/unlock, monitor your fuel level and oil life,² and puts Rewards, Roadside Assistance³ and more in the palm of your hand.



SCAN TO DOWNLOAD
or visit [FordPass.com](https://fordpass.com)
Data rates may apply.

1. The FordPass App, compatible with select smartphone platforms, is available via download. Message and data rates may apply. **2.** FordPass Connect, the FordPass App, and complimentary Connected Service are required for remote features (see FordPass Terms for details). Connected service and features depend on compatible AT&T network availability. Evolving technology/cellular networks/vehicle capability may limit functionality and prevent operation of connected features. Connected service excludes Wi-Fi hotspot. **3.** Roadside Assistance is included for certain owners and available to everyone for a per-service fee. Ford reserves the right to change program details without obligations. Ford Roadside Assistance is a complimentary offering to all Ford owners for up to 5 years or 60,000 miles (from the date of sale), whichever comes first.